



Office Automation Suite V 5.2

Contents

1.	Introduction	3
1.1	General features and technical info	3
1.2	Compatibility matrix	3
2	Installation Guide	4
2.1	Environment Configuration	4
2.2	Configuration Settings	5
2.3	Additional Settings	6
2.4	License Key	7
2.5	Simple distribution – <i>Get batch</i>	8
2.6	Running scripts during installation – PL*SQL	9
2.7	Ribbon name and language	11
2.8	Customized setup	11
2.9	Install setup	12
2.10	Complete setup	12
3	Presentation Objects	13
3.1	Allowance to use the IFS Access provider	13
3.2	Presentation objects for OAS	13
3.3	Ribbon	13
3.4	Information Merger - considerations	15
3.5	Presentation Object Definitions	15
4	Configuration options post installation	16
4.1	Information about the software	16
4.2	License Information	17
4.3	Advanced options	17
4.4	Environments	18
4.5	Tools	18

4.5.1	PL*SQL script execution	19
5	Using OAS with the IFS Aurena client	21
5.1	Prerequisites	21
5.2	Installation	21
6	Test connection	24
7	Certificate considerations	25
7.1	Introduction	25
7.2	Manual Installation	25
7.2.1	Part 1. Installing using the Addovation msi file	25
7.2.2	Part 2. Installing using the Addovation Certificate file	27
7.3	Deployment	30
7.4	GPO roll out:	30
7.5	PDQ Deploy	33
7.6	Distribution of the certificate	35
7.7	Alternative installation	35
7.8	Validate Certificate Installation	36
8	Troubleshooting	37
8.1	Tips and tricks regarding disabled Microsoft Office add-ins	37
8.1.1	Repair	37
8.1.2	Outlook load timeout - Install certificate	38
8.2	Disabled add-ins	39
8.2.1	Whitelisting	39
8.2.2	Re-Enable OAS Add-ins from Office applications	40
8.3	Updating the license key	41
8.3.1	License Expiry	42
8.4	Registry Path variables for MS Office	43

1. Introduction

Addovation's Office Automation Suite (OAS) enables user friendly and process specific tools while maintaining the benefit of keeping all data in IFS' well integrated system. OAS is a proper add-in for Microsoft Office that connects to IFS through the IFS Extended server.

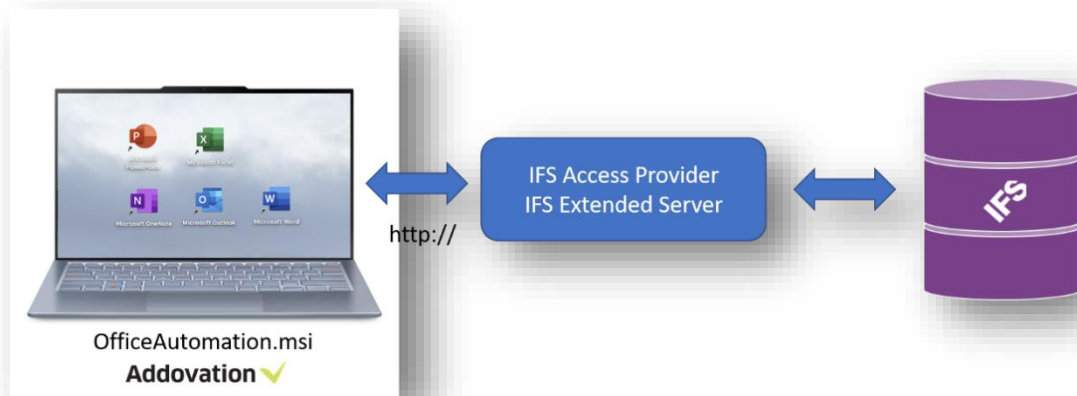


Figure 1 Conceptual illustration

1.1 General features and technical info

The Office Automation Suite consists of multiple modules like Document Management, Information Merger, File Control, Power Tools, Signature etc. They all have the following features:

- ✓ Proper add-ins for Microsoft Office.
- ✓ Deployable on multiple platforms and supports multiple IFS/Office versions.
- ✓ Available in several languages.
- ✓ Installed through a distributable MSI package.

1.2 Compatibility matrix

Office Automation Suite is compatible with/requires the following operating systems, frameworks and applications. Please use the link to see the matrix:

<https://www.addovation.com/technical-info-oas/>

2 Installation Guide

This section will take you through a manual installation of OAS. The application may also be deployed using a deploy tool, of which there are many available. For that reason, we will not cover any of these in this guide.

The Office Automation Suite is installed through an MSI package. Run the .msi file and follow the installation wizard.

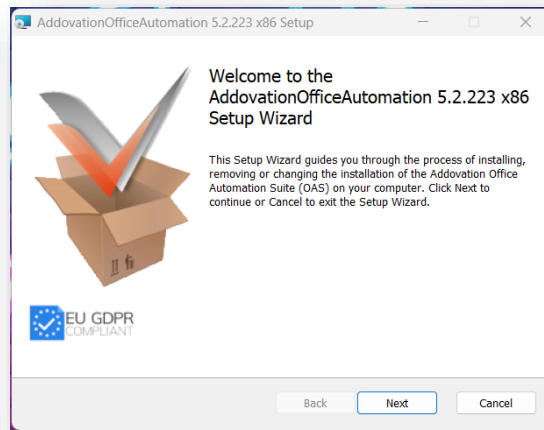


Figure 2 Installation Wizard first page

2.1 Environment Configuration

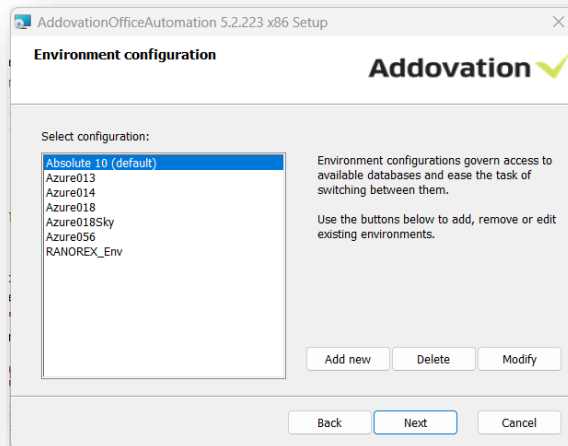


Figure 3 Environment configuration in Installation wizard

When installing the software for the first time, you will need to specify which environment(s) you wish to be able to connect to (see screenshot below, and chapter 2.2). You do this by clicking the Add new button. When upgrading to a new version, or modifying an existing installation, you may choose to retain the current settings and simply click Next or make changes to the environment configuration by clicking Modify.

You will be able to choose between the environments in the OAS login dialog, from any of the supported MS Office applications.

2.2 Configuration Settings

The configuration settings allow you to customize your installation.

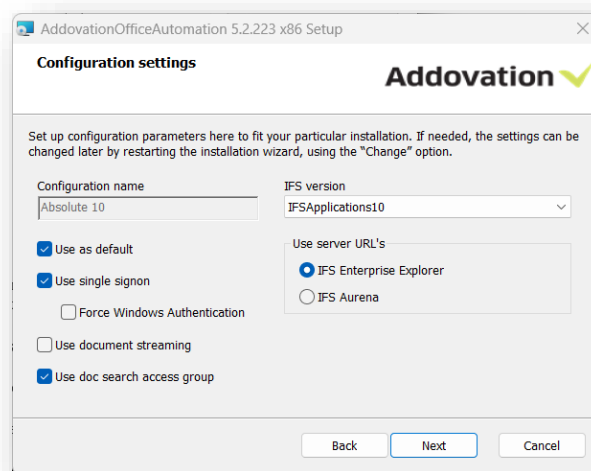


Figure 4 Configuration settings

Configuration name: Choose a name that describes the configuration (e.g. PROD and TEST), if it should be the default logon choice, and whether IFS is configured for single sign-on or not.

Use server URL's: Select if your default client is IFS Enterprise Explorer or IFS Aurena.

IFS Version: Choose your IFS version.

Use as default: Defines if the environment is to be default or not for the end users.

Force Windows Authentication: Sets if we should try and enforce credentials with logged on user.

Use document streaming: Should be used in most cases.

Use doc search access group: Should be used in most cases and only displays classes that the end-users have access to.

If you are not sure what options to check, leave the default values. You can change the values from within the application at any time.

To add a new environment, you need to specify the address to IFS Extended Server (e.g. server1:58080), the Application owner (e.g. IFSAPP) and the IFS portal (e.g. http://race8demo:58080).

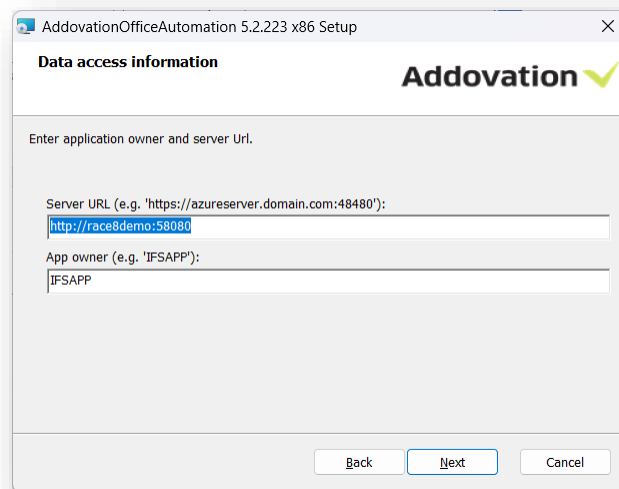


Figure 5 Data access information

2.3 Additional Settings

In the Additional Settings dialog, you can define which classes and formats will be excluded. The field defaults to the asterisk symbol. You can also define the Document Search URL in this dialog.

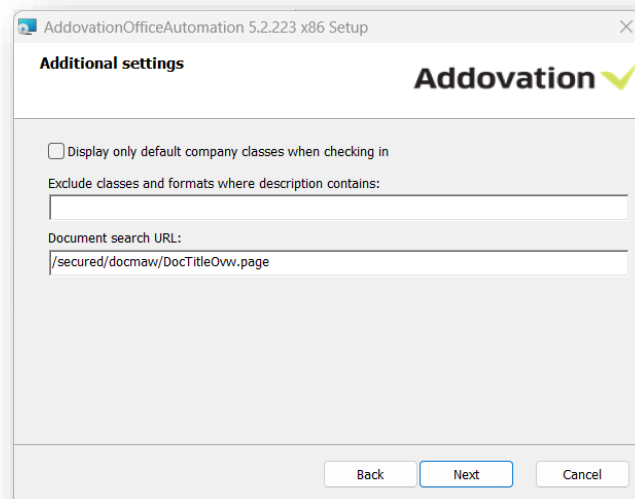


Figure 6 Additional settings

2.4 License Key

You will have received a license key from Addovation upon purchase of the OAS. Please enter the license key during the configuration of the software.

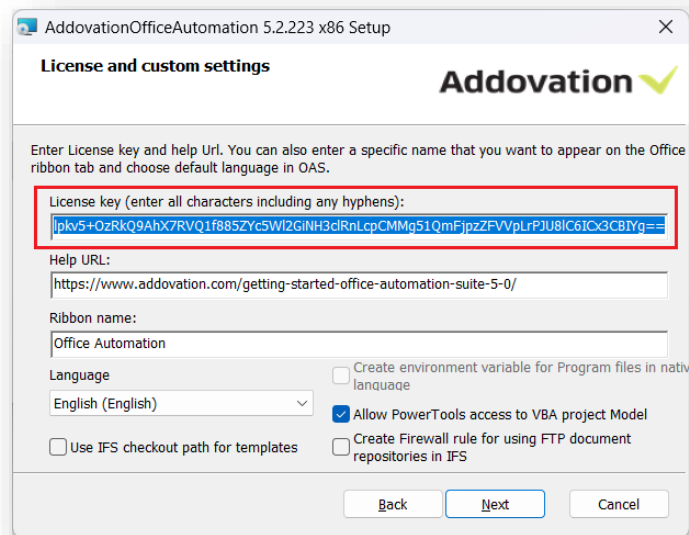


Figure 7 Installation settings, license key

In the **Help URL** field, you can specify what the help symbol in the OAS will point to. Included in the OAS is an online user documentation. If you do not want to provide your own information, leave the link as is already filled in.

The **Ribbon name** field allows the customer to customize the name that appears in the Microsoft Office application's ribbon.

The **Language** dropdown list determines the language used by the add-in in the Microsoft Office application.

The Checkbox Options

The **Allow PowerTools access to VBA project model** is required to use PowerTools project files. This setting changes a configuration value in Microsoft Office.

The **Create Firewall rule for using FTP document repositories in IFS** checkbox ticked opens a port in the firewall on the computer which allows communication with the FTP server used by IFS Applications.

The **Use IFS checkout path for templates** checkbox allow users to checkout templates to IFS checkout path instead of user documents path.

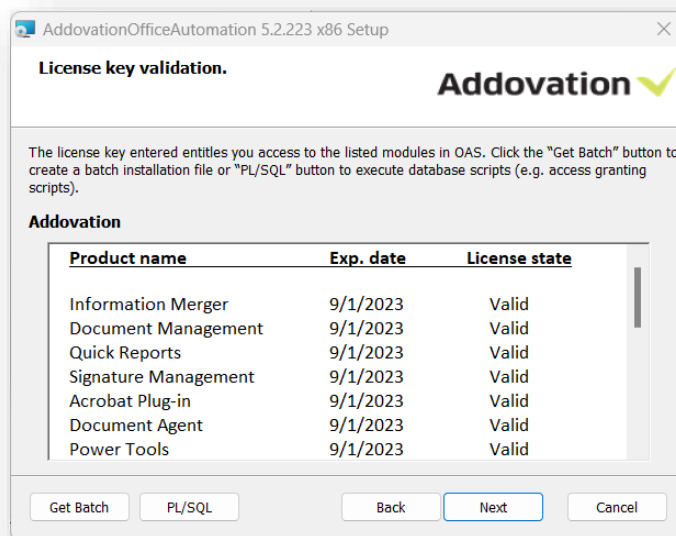


Figure 8 License validation

When you have entered the right license key, you will receive a validation listing the products and their date of expiry.

2.5 Simple distribution – *Get batch*

The 'Get batch' option allows you to install the software on several machines, without having to enter your settings multiple times.

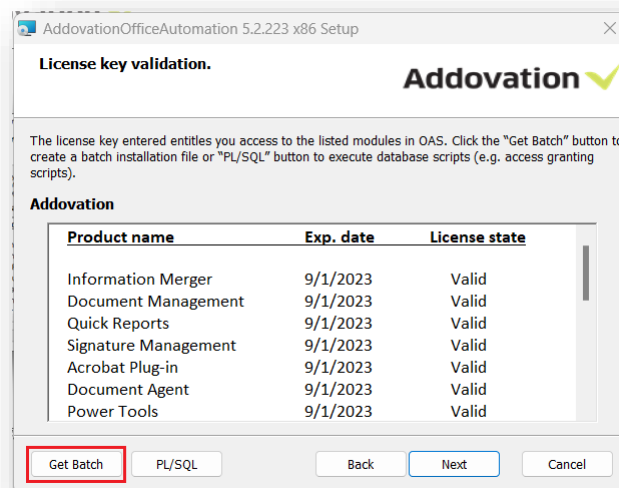


Figure 9 The 'Get Batch' button

If you click the button **Get Batch**, a .bat (batch) file will be created which can be used to launch the .msi using the settings you defined in the current installation.

Observe the following with generating the batch file:

- The batch file must be executed by a user having administrator rights
- If you experience problems running from a network drive, try to copy the installation file to a local drive
- The batch file created can only be used to install 32-bit or 64-bit version, depending on the bitness of the installation file used to create it.

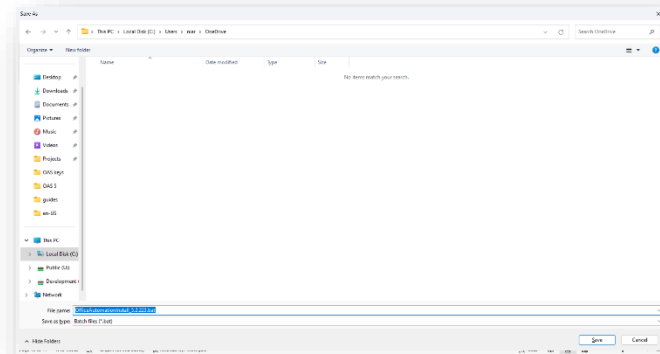


Figure 10 Save the .bat file on a local drive

A batch (.bat) file and a Power Script (.PS1) file is generated at your chosen location.

When you want to distribute the software to other computers, download the .msi, the.bat and the .PS1 file to the chosen computer. Open the .bat file and right click 'run as administrator'. The installation file will then run with your chosen parameters, installing OAS on the computer.

2.6 Running scripts during installation – PL*SQL

If this is the first time you run the OAS installation in the company, your administrator needs to run the PL*SQL function and execute all the *main* scripts that follows the installation. These scripts do the needed changes to the IFS installation to make OAS works as intended, without running the scripts, OAS will not work properly.

The main scripts are those listed in the **Execute PL*SQL scripts** dialog shown below.

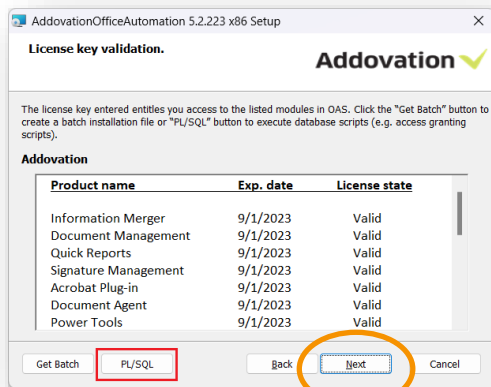


Figure 11 Automatic installation of scripts

Click on the PL*SQL button and type in your username and password (Usually IFSAPP or IFSADM) and the environment where you would like to install the scripts.

If you have scripts saved to your hard drive, you can browse for these using the 'browse' button. Click 'Execute' to run the scripts and to give the necessary access and grants. The wizard will confirm that the scripts were run successfully. You may have to enter parameters for some of the scripts.

Following the installation are a few additional script files that can be executed to insert additional data into the IFS database, e.g., scripts to insert profiles etc. The files can be found in the installation folder under:

Office Automation/SQL_SCRIPTS/AdditionalScripts

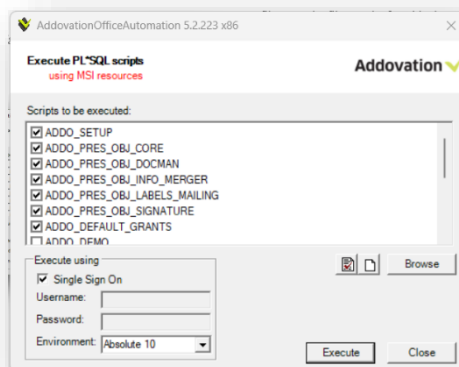


Figure 12 Execute PL*SQL scripts

Important Notes!

Be aware that these additional scripts are sample scripts that need to be thoroughly inspected and verified before they are executed. They do not necessarily meet the requirements for your company needs, but can be edited to do so.

Some of the scripts may already have been modified and executed (like e.g. the "Addovation OAS Installation") which would mean that if the supplied standard script is executed, it will overwrite the modifications done and you will lose them.

Some of the scripts are tailored to support a given IFS version (like e.g. IFS 9), they are marked with "_IFS9" in the name. It will not work to use an IFS9 marked script to update an IFS 10 database.

2.7 Ribbon name and language

You are free to call the ribbon name to whatever suits your organization, in the ribbon name field. This step also allows you to select the language you prefer.

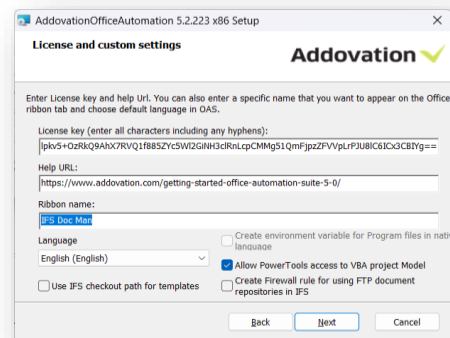


Figure 13 License and custom settings

The setting ‘Allow Power Tools...’ modifies a macro related setting within MS Office, which is necessary for Power Tools based solutions to function. Make sure that the ‘Allow PowerTools...’ is ticked if you use Addovation’s customized Excel solutions.

2.8 Customized setup

Under ‘customized setup’ you can select the way the features are to be installed for the various MS Office components. Click on the icons in the tree list to adjust the installation for the components.

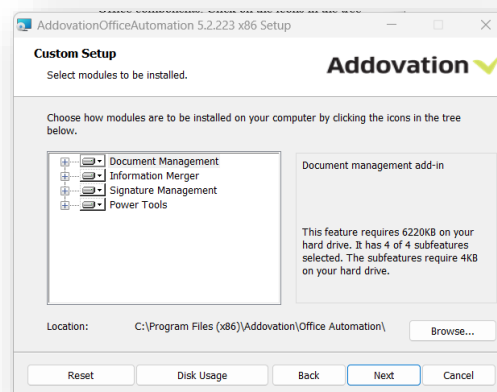


Figure 14 Custom setup

2.9 Install setup

Now you are ready to install OAS 5.2. Click install button to complete setup.

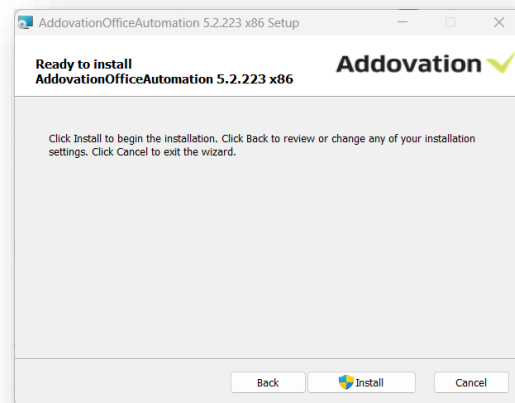


Figure 15 Installation launch page

2.10 Complete setup

When the installation is completed, this screen shows up.

Untick the View User Guide if you don't want it to open.

Click Finish, and you're done.

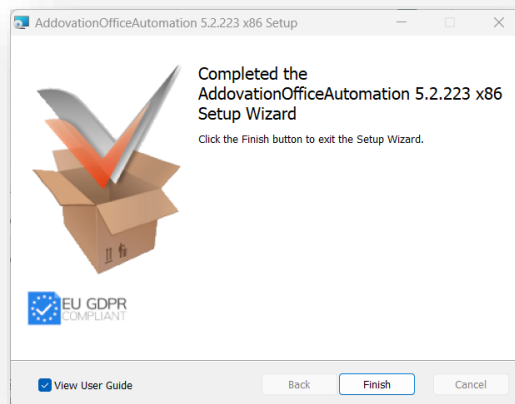


Figure 16 Installation wizard complete page

3 Presentation Objects

OAS is a client-side application that communicates with IFS through the IFS Extended Server. When using OAS, a user must log on using their own user credentials. All business logic and access control mechanisms that exists in IFS is fully obeyed by OAS.

To make it easy to grant access, OAS comes with predefined presentation objects.

3.1 Allowance to use the IFS Access provider

The easiest way to do this is to use the standard permission set FND_PLSQLAP. Users must have this (or equivalent) to run anything through IFS Access Provider.

3.2 Presentation objects for OAS

To make it easy to set up OAS, we have defined a set of presentation objects that are required to run the various modules within OAS.

For each of the modules there are Database Objects and for some modules there are also presentation objects that correspond to a particular button in the ribbon.

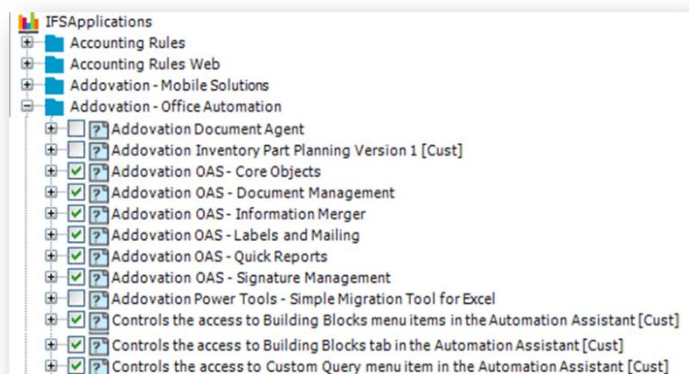


Figure 17 Examples of presentation objects by component

3.3 Ribbon

There are three mechanisms in the ribbon that governs button visibility.

- If the company / user has a license to run the module or not
- If user has permission set granted to specific button(s) or not
- If user is logged on to the database or not.

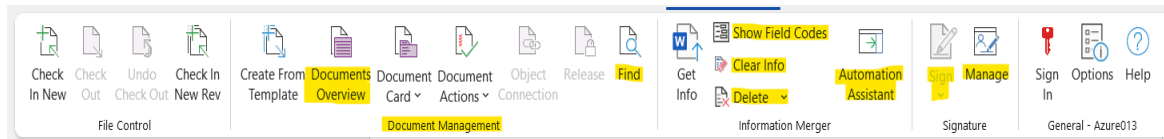


Figure 18 Addovation Ribbon buttons that may be controlled by PO's

The highlighted buttons are governed by the presentation objects that are listed below. E.g. Automation Assistant button is governed by presentation object displayed below.

Note that until the user has logged on, it is not possible to know if the user has grants or not. That means some buttons and button groups will be invisible until the user is logged on.

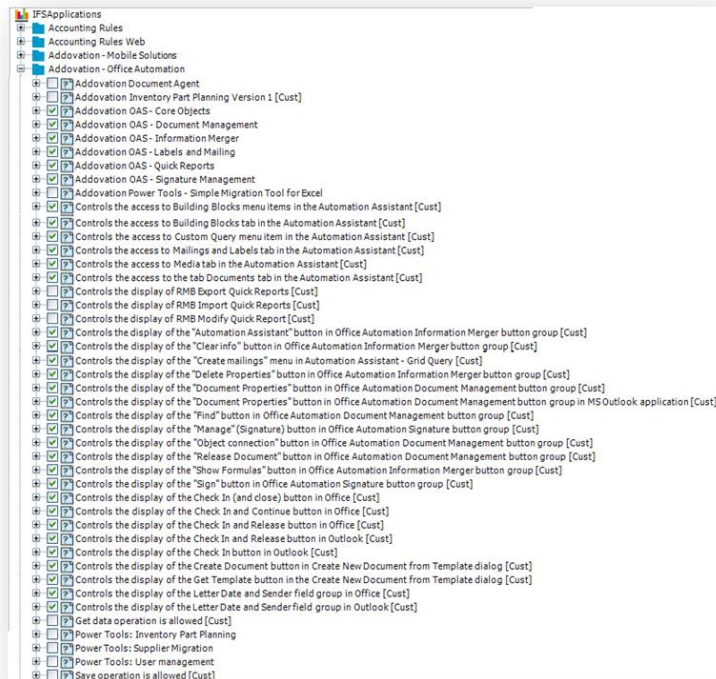


Figure 19 Examples of presentation objects by component

3.4 Information Merger - considerations

Note that for Information Merger we have created presentation objects for the “core operations”. However, there are no presentation objects for objects like Project and WorkOrder that may be connected to an object.

3.5 Presentation Object Definitions

The presentation object definition files are located under the Program Files folder e.g.

C:\Program Files (x86)\Addovation\Office Automation\SQL_SCRIPTS

*Note that every new version of OAS may come with new or modified functionality that may require access to new database objects, which means that the presentation objects scripted in these script files may have been modified or new objects added. So, whenever a new version of OAS is installed, the scripts should always be re-executed. Go to the **OAS Options / Tools / PL*SQL** dialog to do this. You need the application owner password to perform this operation.*

4 Configuration options post installation

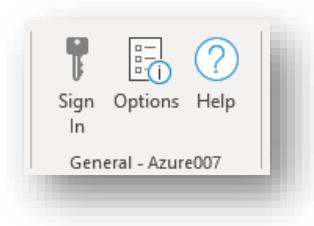


Figure 20 Options button

When you have installed the OAS, you will have the opportunity to obtain information from, and change/ reconfigure the software. This can be done by clicking on the **Options** button in the Addovation ribbon.

Not all pages in this dialog is included in this document. Please see the *Assistance OAS 5.2 User Guide* for the complete coverage of all pages in this dialog.

4.1 Information about the software

In the Options dialog you'll find information about the OAS version you have installed.

Information **About** the OAS version you have installed on your compute, including version and a purchased modules overview:

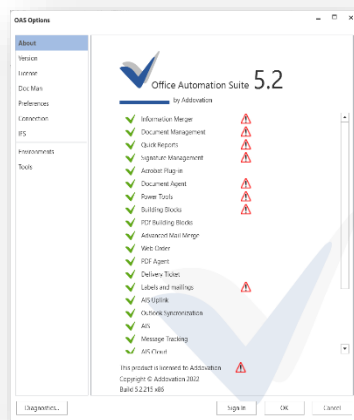


Figure 21 About page

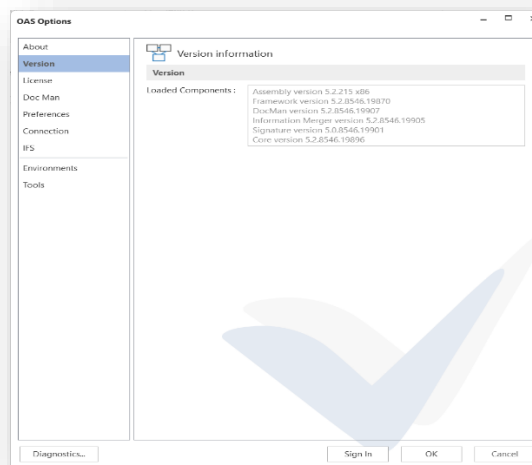
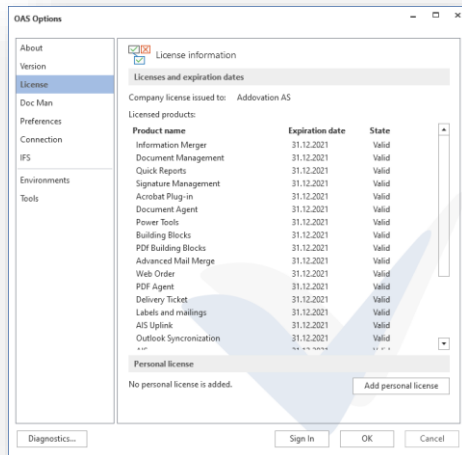


Figure 22 Version info page

The **Diagnostics...** button at the bottom left-hand side can be executed at any time and by anyone to create a diagnostics report that can be reviewed and even sent to Addovation in case any issues occur.

The **Sign In** button simply opens the Sign in dialog.

4.2 License Information

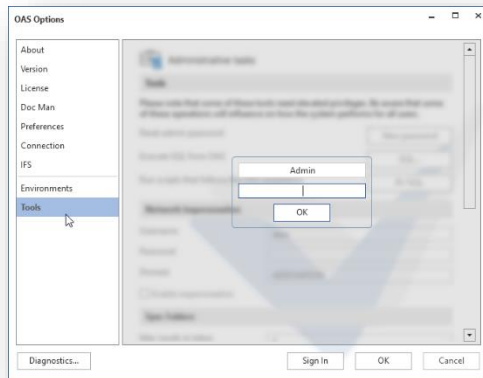


The License page shows you all your currently purchased product licenses.

You can also add and update your personal license from this page. You will also see a list of the products you have registered for, the license state and the expiry date.

Figure 23 License info page

4.3 Advanced options

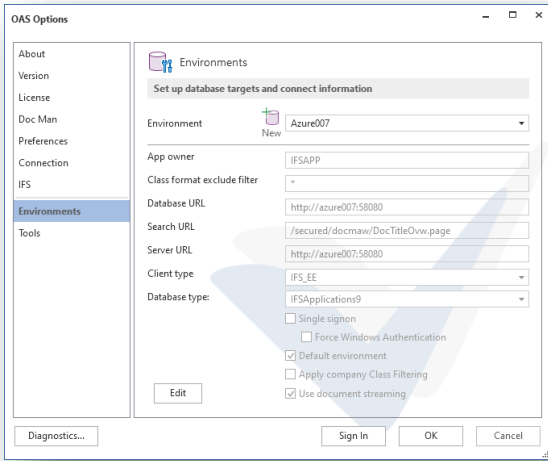


The two last Options pages, Environments and Tools requires a password to be entered to, to be able to edit the pages.

Click one of the page selectors and enter the password when asked for.

Figure 24 Tools requires a password to be entered

4.4 Environments

	<p>From the Environments page, you can view and edit existing environment definitions and create new (requires application is run as administrator).</p>
<p><i>Figure 25 Environments page</i></p>	

4.5 Tools

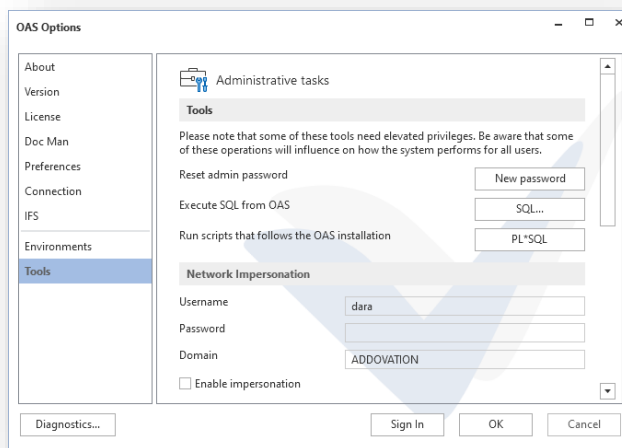


Figure 26 Tools page

From the **Tools** page, several powerful tools and configuration options can be reached. From the *Tools* section you have the following additional options.

- New password – Gives you the opportunity to change the default Admin password. Note that the new password is stored in IFS, and as such may vary from one environment to another.
- SQL – Opens SQL dialog for executing simple SQL queries from within OAS
- PL*SQL – Opens a dialog for executing PL*SQL scripts

These are not to be described in detail here, please refer to the OAS User Guide for a closer description on usage. However, we'd like to draw your attention to the PL*SQL script execution option, which makes it possible to execute the mandatory installation scripts like under the installation wizard.

4.5.1 PL*SQL script execution

The **PL*SQL** button opens a dialog for executing PL*SQL scripts. This is also a typical *administrator* task to perform.

This dialog is intended for executing scripts that follows the OAS installation that creates all needed presentation objects in the IFS database. The dialog is also available during installation of the OAS software.

By default, these scripts are included in the list of scripts to execute. They need to be executed only once, as they insert permanent object to the IFS database that is the target of the operation.

You can un-tick all the standard scripts and browse for any other scripts that you want to execute.

Enter Username and Password and target database before hitting the **Execute** button. The Single Sign On checkbox must be used when targeting a single sign on configured IFS installation.

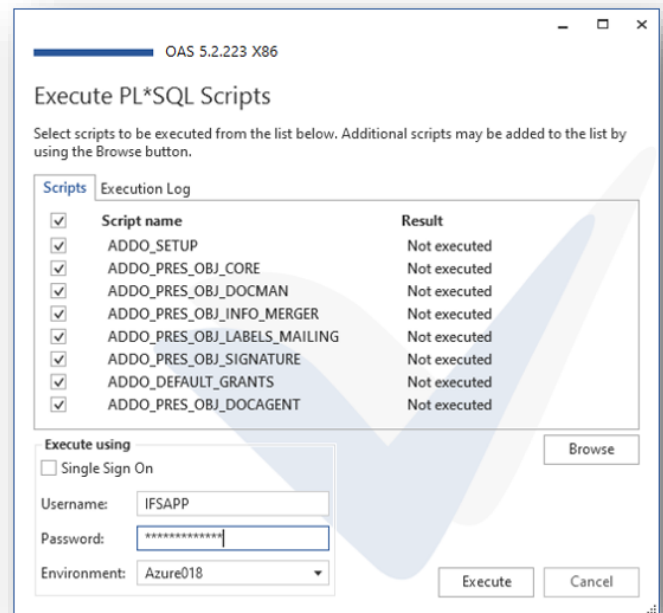


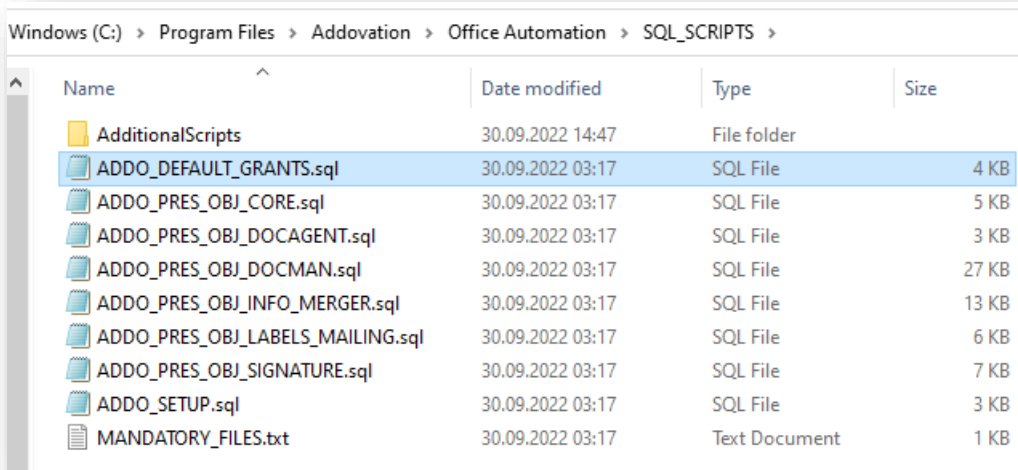
Figure 27 PL*SQL Scripts execution dialog

The scripts used by the OAS installation contain variables that have to be filled in when run manually:

&ProfileName

&ProfileSection

&ProfileValue



Name	Date modified	Type	Size
AdditionalScripts	30.09.2022 14:47	File folder	
ADDO_DEFAULT_GRANTS.sql	30.09.2022 03:17	SQL File	4 KB
ADDO_PRES_OBJ_CORE.sql	30.09.2022 03:17	SQL File	5 KB
ADDO_PRES_OBJ_DOCAGENT.sql	30.09.2022 03:17	SQL File	3 KB
ADDO_PRES_OBJ_DOCMAN.sql	30.09.2022 03:17	SQL File	27 KB
ADDO_PRES_OBJ_INFO_MERGER.sql	30.09.2022 03:17	SQL File	13 KB
ADDO_PRES_OBJ_LABELS_MAILING.sql	30.09.2022 03:17	SQL File	6 KB
ADDO_PRES_OBJ_SIGNATURE.sql	30.09.2022 03:17	SQL File	7 KB
ADDO_SETUP.sql	30.09.2022 03:17	SQL File	3 KB
MANDATORY_FILES.txt	30.09.2022 03:17	Text Document	1 KB

Figure 28 PL*SQL Scripts in OAS

Example:

ProfileName: "Addovation OAS Installation"

ProfileSection: "User/Addovation/OAS"

ProfileValue: "5.2.225" <the OAS BuildNumber, for example 5.2.225>

```

BEGIN
    select profile_id into ProfileId_ from &AO..Fnrrr_Client_Profile WHERE PROFILE_NAME = 'Addovation OAS Installation';

    EXCEPTION
        WHEN NO_DATA_FOUND THEN
            ProfileId_ := NULL;
END;

IF ProfileId_ is null THEN
    &AO..Fnrrr_Client_Profile_Api.Create_Base__(ProfileId_, 'Addovation OAS Installation');
END IF;

&AO..Fnrrr_Client_Profile_Value_Api.Set_Value__(ProfileId_, 'User/Addovation/OAS', 'ADDO_DEFAULT_GRANTS', '5.2.225');
COMMIT;
END;

```

Figure 29 Example values for parameters

5 Using OAS with the IFS Aurena client

With OAS 5.1.210 and later, you can use OAS together with Aurena in a seamless way. To get this working there are a few prerequisites and things you need to do.

5.1 Prerequisites

For OAS to work seamlessly together with the IFS Aurena client, you need to

1. Set the Chrome Web browser as your default browser
2. Install the Chrome Extension *IFS Aurena Extension*

5.2 Installation

There are several ways to accomplish the above, one way is to follow the guidelines below

1. From the Sign in dialog in OAS, click the Test Url button in the expanded view (Test connection section), see picture to the right.
2. Now the Chrome web browser open like shown in the figure below. Here you can actually see if the IFS Aurena Extension has already been installed – like in this case (hover over the IFS icon and review the tool tip)

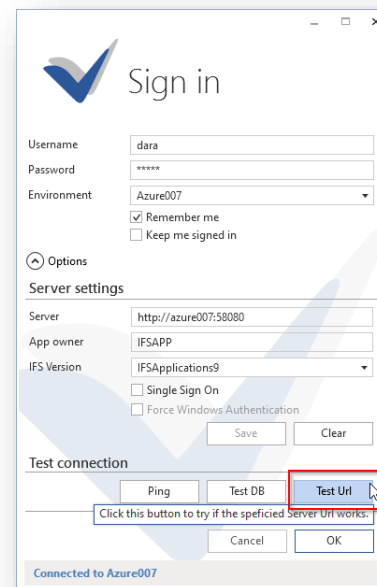
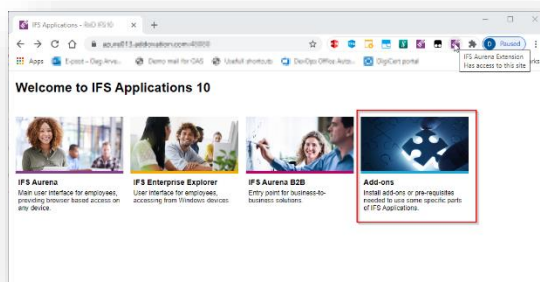


Figure 30 Using Test Url to access IFS Applications page



Click on the Add-ons section. A new page is displayed, showing different information regarding what to do to get IFS running properly in different situation. We want to turn your attention to the second bullet point. Her it is described how to install the IFS Aurena Extension.

Follow the instructions and use the download links provided here.

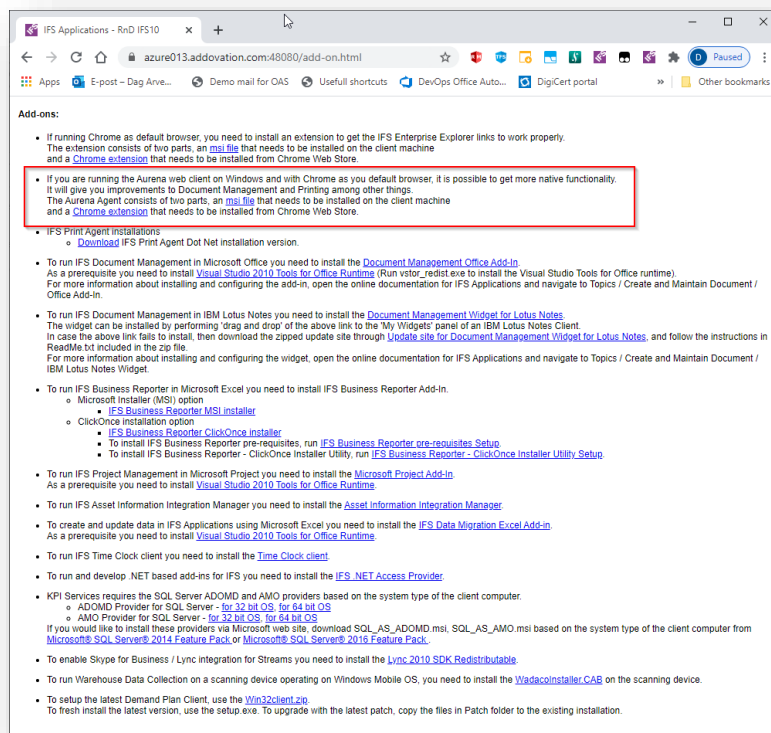


Figure 31 IFS Applications Add-ons page

The next thing you need to do is to tell OAS that you want to use the Aurena client as your default client. This is done by

- Open e.g. Word (remember Run as administrator to be able to make changes to the environment)
- Log on to the environment in question
- Open the OAS Options dialog
- Tick the **Use Aurena as default IFS Client** (note that this checkbox is visible only if you are targeting an IFS 10 installation). The **Client type** dropdown will automatically change to IFS_AURENA:

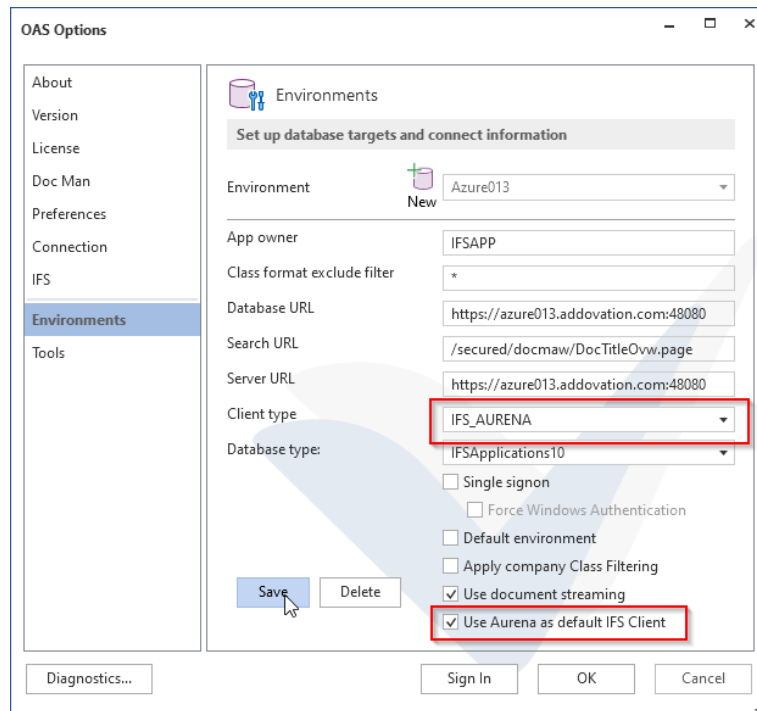


Figure 32 OAS Options / Environments page

- e. Click the **Save** button

When this is done, everything should be ready for OAS – Aurena collaboration:

- When documents are checked out from IFS, they are opened and recognized as OAS documents (provided they are checked in from OAS)
- Documents checked in using OAS will (as before) be marked as OAS created documents
- Any links used from OAS, pointing to pages in IFS will open the corresponding page in Aurena.

6 Test connection

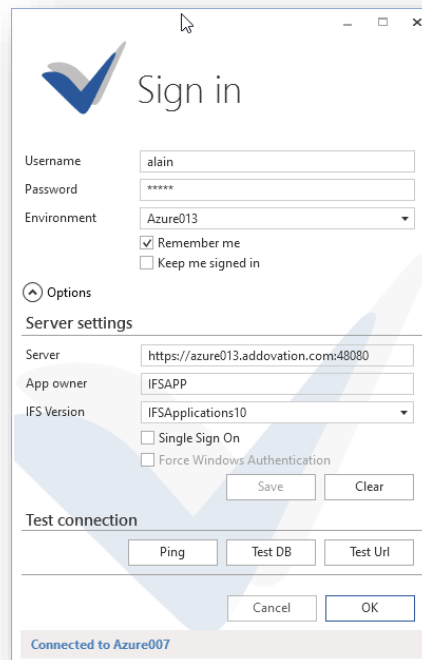
From the expanded Log on dialog, the following options can be used to test your settings:

Ping: This allows you to verify the server connectivity (Note: Some network configurations block the ping command). Even if ping is not successful it might be possible to communicate with IFS Extended server.

Test DB: This verifies whether the extended server is reachable via the access provider.

Test URL: This option will open the web browser and navigate to the URL you specified in the configuration settings.

You can also temporarily change the environment configuration directly from the OAS, under the **Option** button. This will be saved as a custom environment.



The screenshot shows the 'Sign in' dialog box for Addovation. It includes fields for Username (alain), Password (masked with asterisks), and Environment (Azure013). There are checkboxes for 'Remember me' (checked) and 'Keep me signed in'. Below this is an 'Options' section with 'Server settings' including Server (https://azure013.addovation.com:48080), App owner (IFSAPP), and IFS Version (IFSApplications10). There are also checkboxes for 'Single Sign On' and 'Force Windows Authentication'. At the bottom is a 'Test connection' section with buttons for 'Ping', 'Test DB', and 'Test Url'. The dialog has 'Save' and 'Clear' buttons for server settings, and 'Cancel' and 'OK' buttons for the test connection. A status bar at the bottom indicates 'Connected to Azure007'.

Figure 33 Test connection section

7 Certificate considerations

7.1 Introduction

Office Automation Suite (OAS) is a digitally signed application, which means that you know that the software you are running is the original software and that no-one has tampered it.

The Trusted *Publishers certificate store* contains information about the Authenticode (signing) certificates of trusted publishers that are installed on a computer. A publisher is any developer or software company that has created and distributed a digitally signed add-in. The certificate associated with the digital signature must be issued by a reputable certificate authority (CA).

If the verifier is offline or blocked (disconnected from the Internet) it is impossible to check certificate-revocation data, or to verify time stamps if they are present (expiry). The root certificate authority who issued the certificate must be trusted by the user. If any of these scenarios occur, the verification of the add-in may be delayed or impossible, in which case the add-in may be deactivated by the Office Application.

For OAS to work optimally, *it is strongly recommended to install the Addovation Certificate on your computer(s).*

There are several ways to this, in this guide we provide you with

- Manual installation with a step by step instructions to how this can be done in an easy way.
- Tips on how one can deploy the certificate from the IT department

7.2 Manual Installation

There are two starting points for installing the certificate manually:

- If you are provided with the certificate file itself, you can skip part 1 of the installation steps and go directly to part 2.
- If you have access to the msi file (Addovation installation package), you can install the certificate using this file, as described in part 1 and complete the installation by doing steps 3 through 5 in part 2.

In the following section, all step to install the Certificate and place it in the Trusted Publishers location is provided

First, to install a certificate into the Trusted Publishers store, **you must have administrator rights** on your computer.

7.2.1 Part 1. Installing using the Addovation msi file

If you have the Addovation msi file, you can complete the installation of the certificate from the .msi file. If you have the certificate file itself, skip Part 1 and go directly to Part 2.

Install by following these steps:

Locate the msi file, right click on the file and choose **Properties** in the pop-up menu.

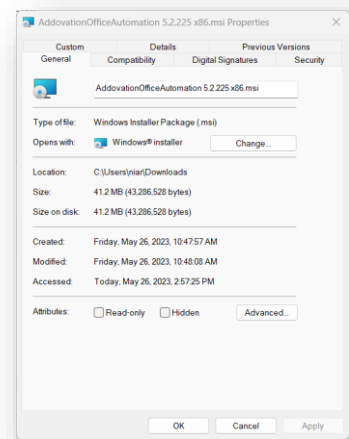


Figure 34 General

In the upcoming dialog, click **Digital Signature** tab

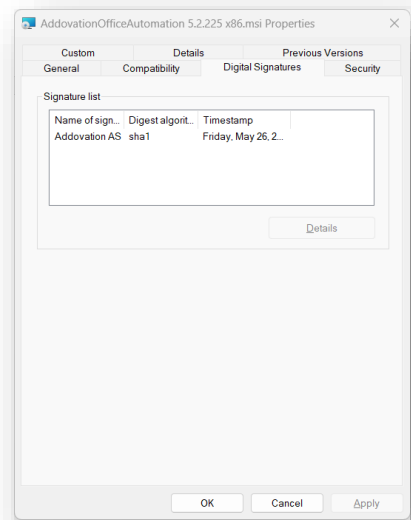


Figure 35 Digital Signature

Now, click on the **Addovation** signature in the list and click **Details**

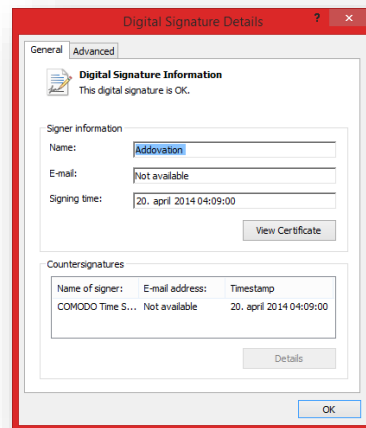


Figure 36 General

Click the **View Certificate** button, the dialog below appears:

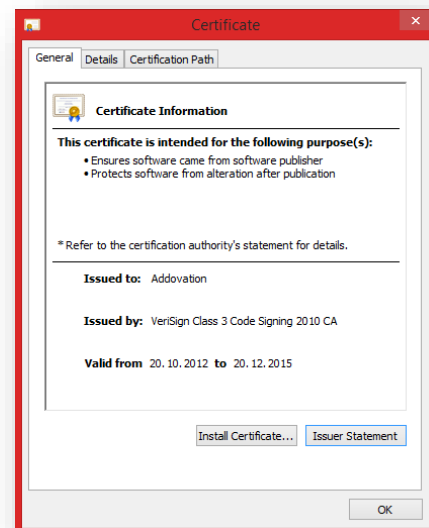


Figure 37 Install Certificate

Click the **Install Certificate...** button

Go to **Part 2** of the installation guide and proceed from **step 3 to the end**.

7.2.2 Part 2. Installing using the Addovation Certificate file

Provided you have a certificate file, you can install the certificate by following the steps below.

If you do not have a certificate file, install from the installation file (.msi file) as described in Part 1.

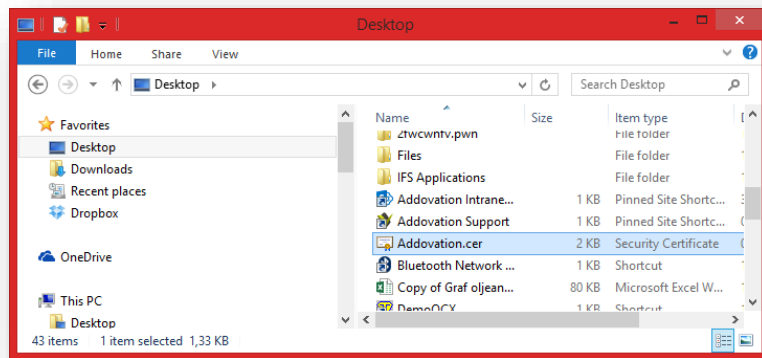


Figure 38 Locate Certificate file

1. Locate the certificate file, right click and choose **Install Certificate**
2. The Certificate installation wizard will appear

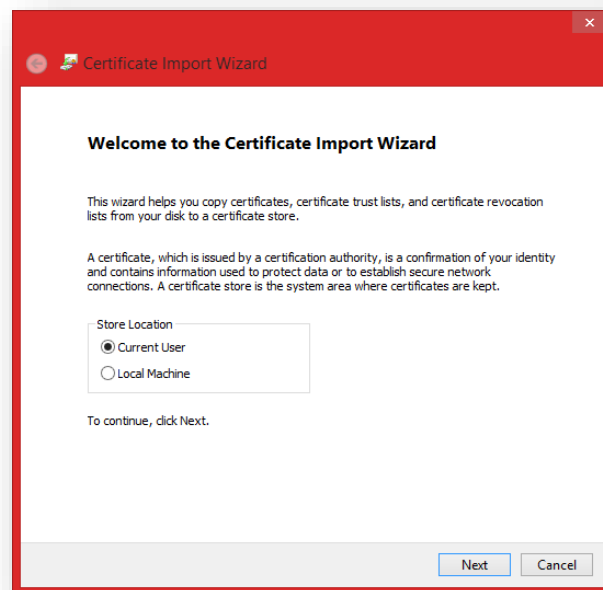


Figure 39 Import wizard

- Click **Next** button. Choose the **Place all certificates in the following store** and then click the **Browse...** button. The **Select Certificate Store** dialog appears:

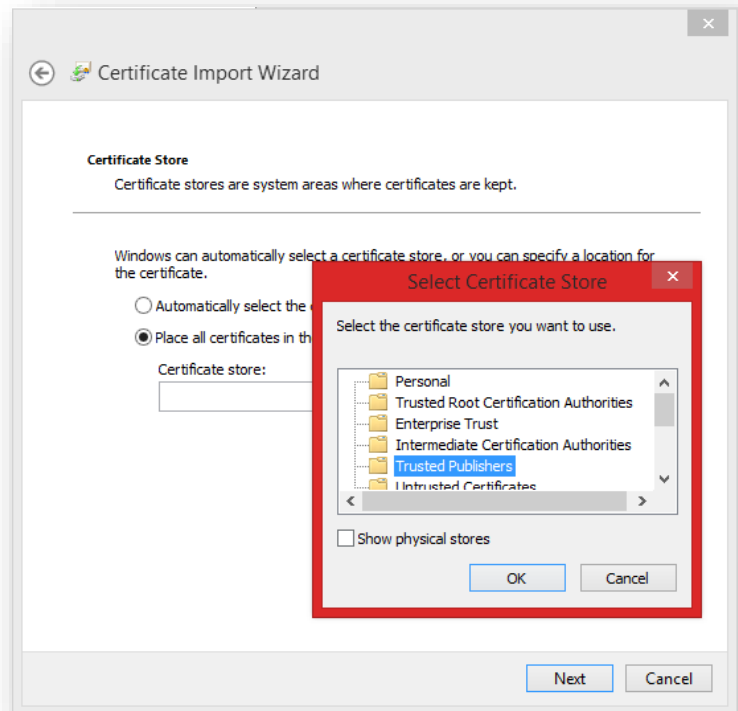


Figure 40 Certificate import wizard

- Select the Trusted Publishers store and click OK. A confirmation page is shown:

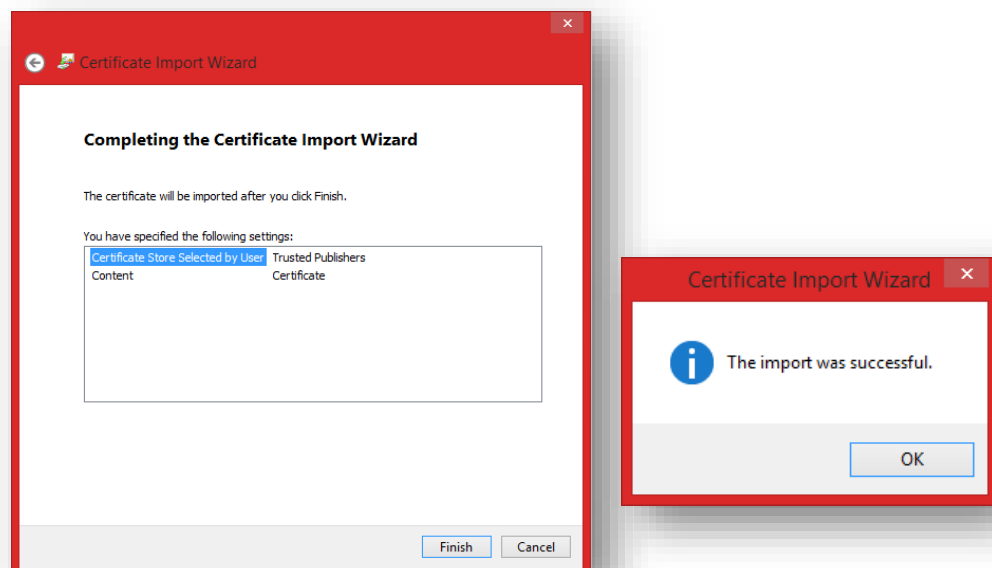


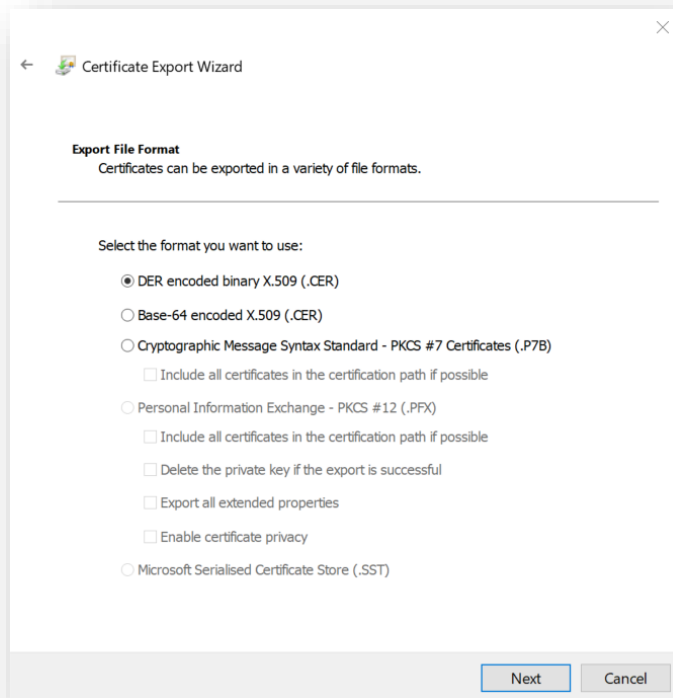
Figure 41 Certificate import wizard and confirmation dialog

- Click **Finish**. The installation is confirmed.

This completes the installation for a local computer.

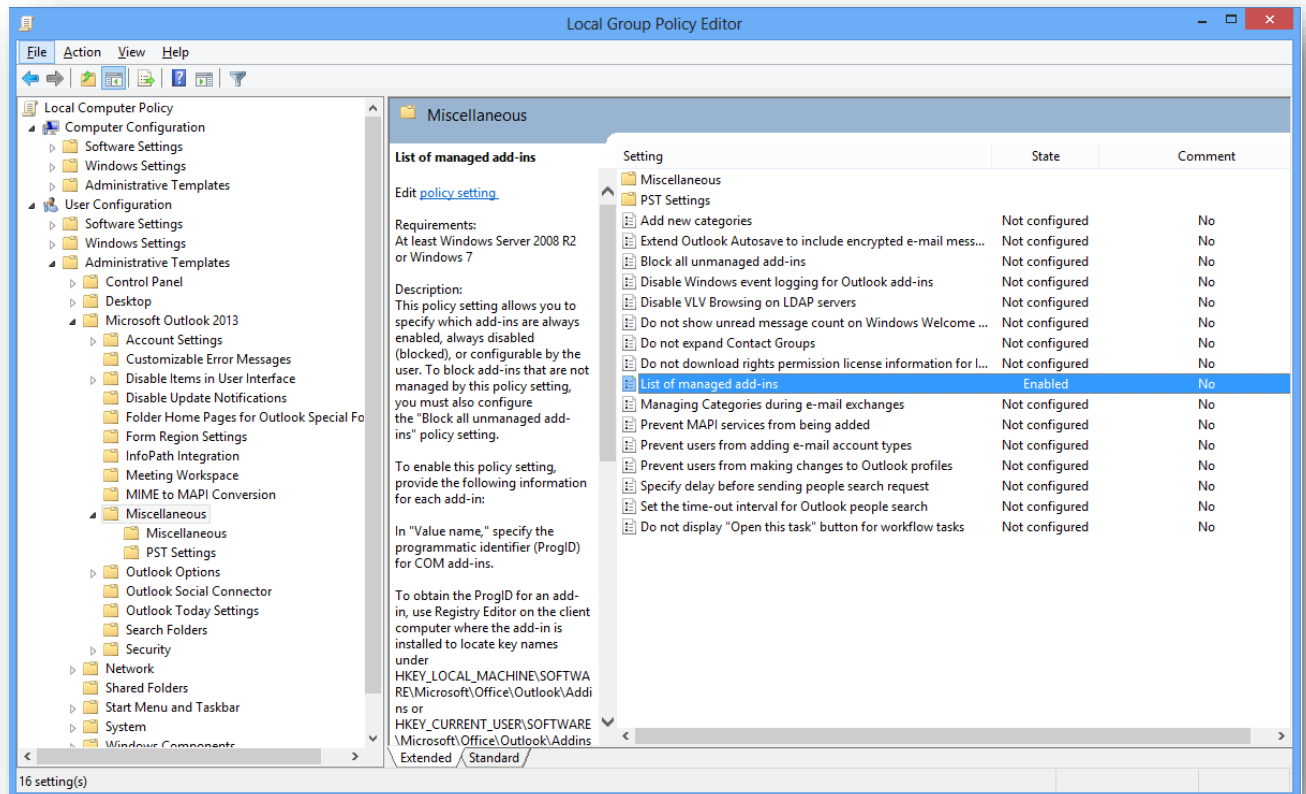
7.3 Deployment

Complete the steps above to install on your local computer. Open certificate manager for local machine **run > certlm.msc**. Export the certificate as **DER encoded X.509** and save it on a network share, your company's deployment share or another appropriate location.

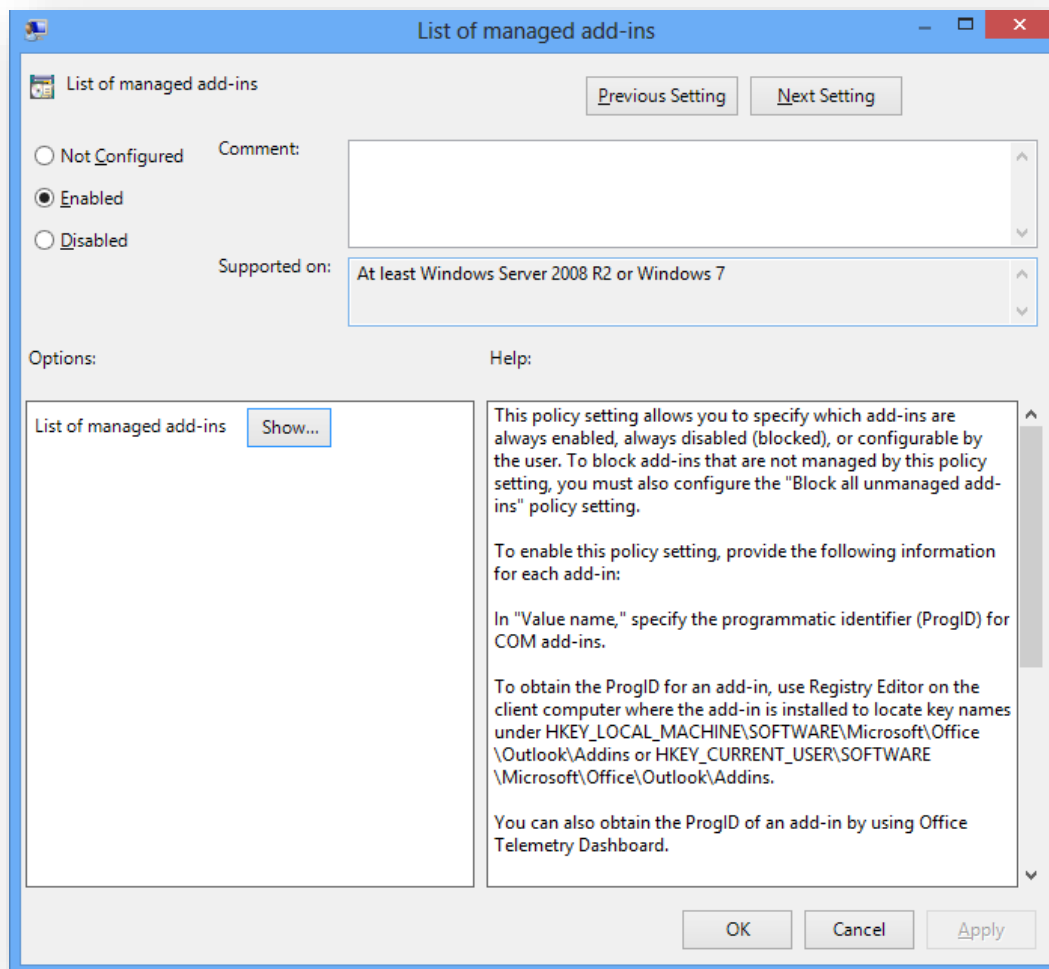


7.4 GPO roll out:

1. Open Group Policy and check that the Office 2013/2016 Administrative Templates are installed
 - If the templates are installed, you will see the “Microsoft Outlook 2013/2016” in the User Configuration > Administrative Templates > Microsoft Outlook 2013> Miscellaneous path
 - If the templates are not installed, you can download the templates from Microsoft. See [Administrative Template files \(ADMX/ADML\) and Office Customization Tool for Office 365 ProPlus, Office 2019, and Office 2016](#)



2. Enable the “List of managed add-ins” policy setting



3. See “Show” button. Add entries for “Addo2.DocMan.Connect” and “Addo8.OfficeAutomationCore.Connect” (the add-ins progId) and set the Value to “1” in this setting. The value “1” means that add-in cannot be disabled by users.

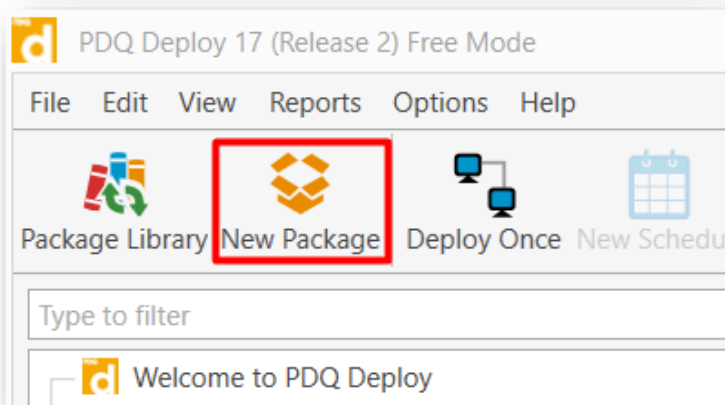
7.5 PDQ Deploy

Use this method to deploy the certificate with the free deployment software **PDQ Deploy** from your computer. This requires you to be domain admin. The tool can be downloaded from here:

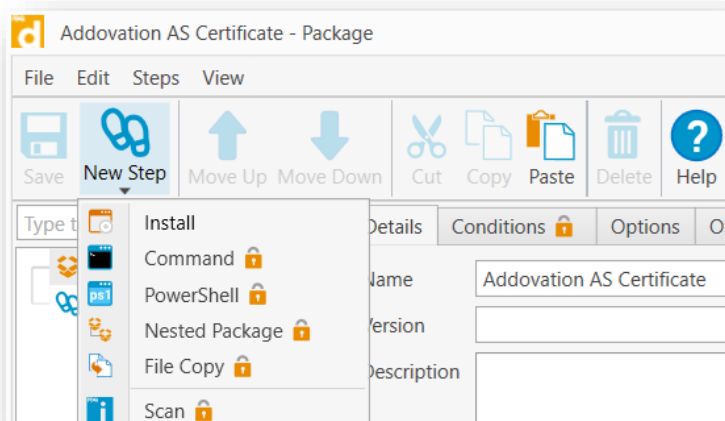
<https://www.pdq.com/pdq-deploy/>

The certificate should be located on ex. a file share. Create a .bat file with the following content:
certutil.exe -addstore TrustedPublisher "\\<path_to_network_share>\Addovation AS.cer"

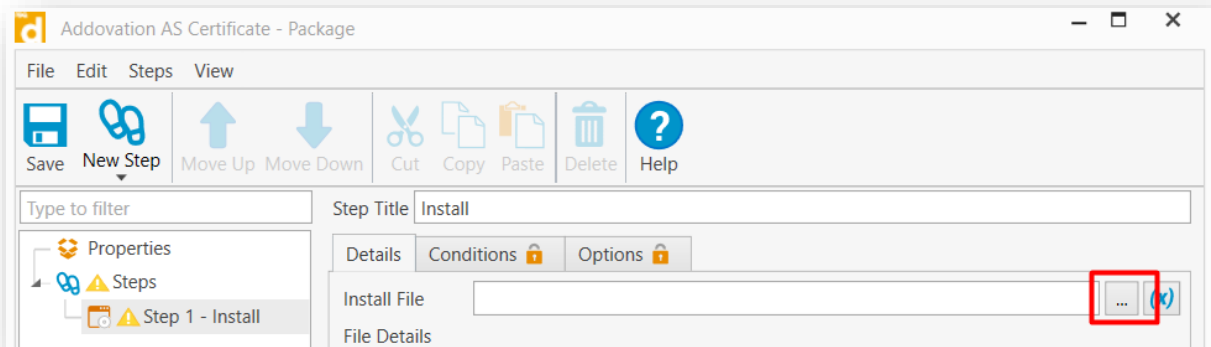
Create a new package in PDQ Deploy



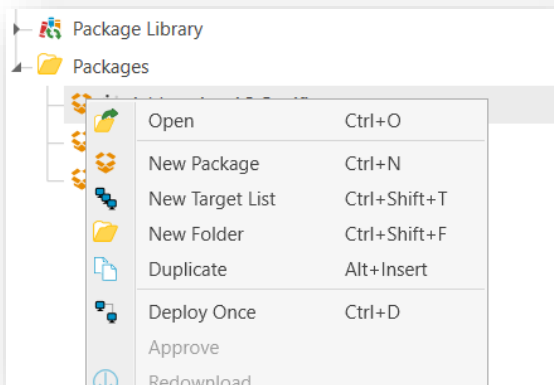
Give the deployment a name and add a new “Install” step



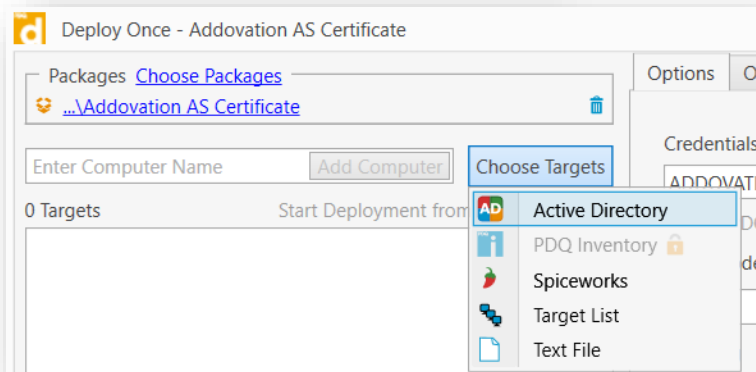
Give the step a name and browse the .bat file located on you network share. Press save.



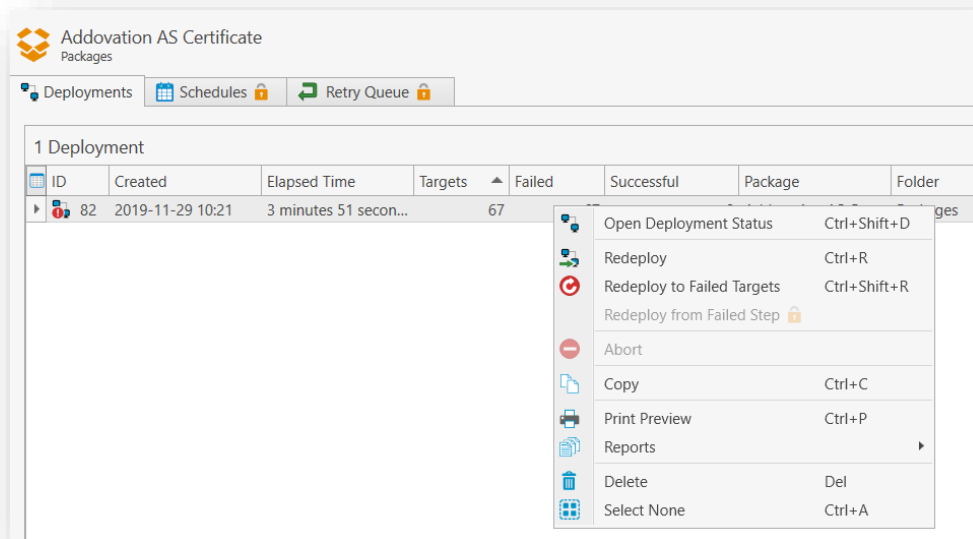
Deploy with right mouse click on the package and then deploy once



Leave default settings and choose target active directory, then locate the computers / group you want to deploy and click deploy now.



Failed targets can be redeployed



7.6 Distribution of the certificate

As mentioned, there are several ways to deploy a certificate, another way is to use PowerShell:

```
Import-Certificate -FilePath mycertificate.cer -CertStoreLocation Cert:\LocalMachine\TrustedPublisher
```

or

```
certmgr.exe -add mycertificate.cer -c -s -r localMachine TrustedPublisher
```

or

```
certutil -addstore "TrustedPublishers" mycert.cer TrustedPublisher "Trusted Publishers"
```

7.7 Alternative installation

As mentioned, there are several other ways to obtain and install a Publishers Certificate, a couple of them described below. If the above description does not fit your needs, please contact Addovation or learn more using the links below.

<http://office.microsoft.com/en-us/word-help/add-remove-or-view-a-trusted-publisher-HA010034138.aspx>

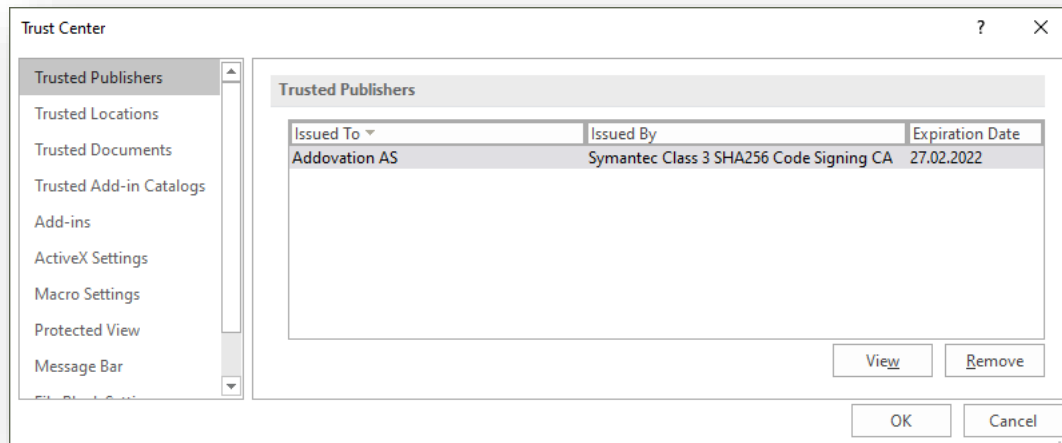
<http://technet.microsoft.com/en-us/library/ff428091.aspx>

7.8 Validate Certificate Installation

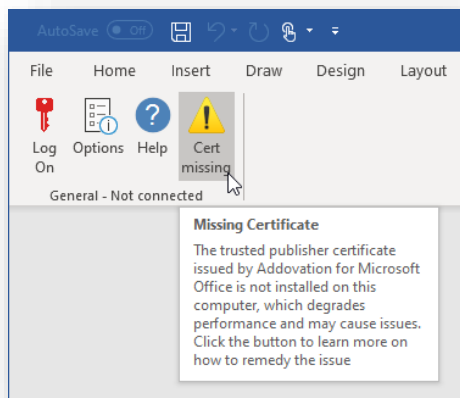
If the certificate were correctly installed it should be visible from Outlook.

File > Options > Trust Center > Trust Center Settings > Trusted Publishers

Addovation AS should be listed as a trusted publisher.



If the certificate is missing, an indication button will also appear in the OAS ribbon:



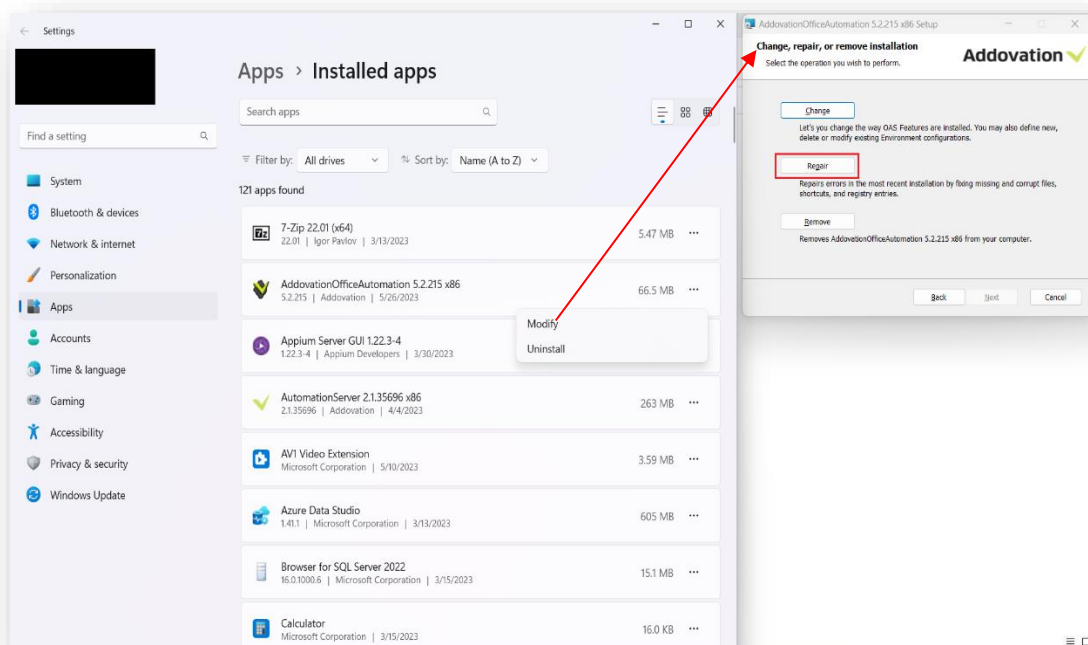
8 Troubleshooting

8.1 Tips and tricks regarding disabled Microsoft Office add-ins

This section contains tips and tricks on how to prevent Microsoft Office and, in particular Microsoft Outlook, from disabling Addovation add-ins. Consider this section as a recommendation to read through if you experience such problems.

8.1.1 Repair

If you run into problems and cannot resolve them, our recommendation is to run the OAS built-in “Repair” functionality. You do this by opening the Installed apps window from the start menu (RMB click on the Windows Start flag and select Installed apps from the context menu):



In this window, click on the AddvationOfficeAutomation ... app and click the Modify button, after which the installation wizard for OAS opens. Now, click next and then the Repair button as shown above.

8.1.2 Outlook load timeout - Install certificate

Timeout (too long time spent loading the add-ins) seems to be a problem mainly in Microsoft Outlook. Addovation OAS is a digitally signed software which means that Microsoft Outlook will trust the software if the certificate is installed and skip some checking routines (including online lookups) and thereby making it load faster.

The important part here is that the software is signed within the time period defined valid in the certificate currently rolled out. If the problem persists, it can also be related to network issues causing the load procedure to time out.

8.2 Disabled add-ins

A key prerequisite for Outlook to load the OAS add-ins quickly enough to avoid disabling is that the associated certificate is installed and available in Microsoft Office (under "Trusted Publishers"). If the certificate is not installed on the local computer, Outlook must verify the add-in with a call to an external authority on the Web. This could potentially cause a delay and is strongly instrumental in making add-ins automatically disabled and blocked by Outlook.

The certificate that the OAS add-ins uses is the same for all versions. Expiration date does not have the same effect on the software as for regular certificates. The certificate is included in the installation package (.msi) that you receive from Addovation, and section 0 in this Guide explains how to install it.

When Outlook blocks add-ons, an entry is automatically created in Registry under:

- HKCU\Software\Microsoft\Office\16.0\Outlook\Resiliency\DisabledItems

For the add-in to be loaded into Outlook, you need to *remove* the values from the Registry.

We recommend customers to install the certificate on all computers that are to use OAS. If this is done, and you still experience that the add-ins are disabled, the next measure would be to explicitly tell Office not to disable the add-in, also known as a *whitelisting*. This is done by adding specific registry entries to the Registry. How to do this is explained in the next section.

8.2.1 Whitelisting

By adding a Registry entry, you can prevent a Microsoft Office application from blocking an add-in. This must be done for each Office application (see the Registry paths used below) where you want a whitelisting. The entries can be inserted into both the HKCU and HKLM registry hive.

- HKCU\Software\Microsoft\Office\16.0\Outlook\Resiliency\DoNotDisableAddInList

OAS for Outlook has two add-ins:

- Addo2.DocMan.Connect
- Addo8.OfficeAutomationCore.Connect

Sample commands that can be used in a Batch file:

```
REG ADD "HKCU\Software\Microsoft\Office\16.0\Outlook\Resiliency\DoNotDisableAddInList" /v  
Addo2.DocMan.Connect /t REG_DWORD /d 1 /f
```

```
REG ADD "HKCU\Software\Microsoft\Office\16.0\Outlook\Resiliency\DoNotDisableAddInList" /v  
Addo8.OfficeAutomationCore.Connect /t REG_DWORD /d 1 /f
```

```
REG ADD "HKLM\Software\Microsoft\Office\16.0\Outlook\Resiliency\DoNotDisableAddInList" /v  
Addo2.DocMan.Connect /t REG_DWORD /d 1 /f
```

```
REG ADD "HKLM\Software\Microsoft\Office\16.0\Outlook\Resiliency\DoNotDisableAddInList" /v  
Addo8.OfficeAutomationCore.Connect /t REG_DWORD /d 1 /f
```


Further information can be found here:

<https://docs.microsoft.com/en-us/office/vba/outlook/concepts/getting-started/support-for-keeping-add-ins-enabled>

If the end-user is still experience problems, then please try to log on to the same computer with another Microsoft Windows user. If this user is not experiencing the same problems, the former user profile may be corrupted and probably has to be rebuilt.

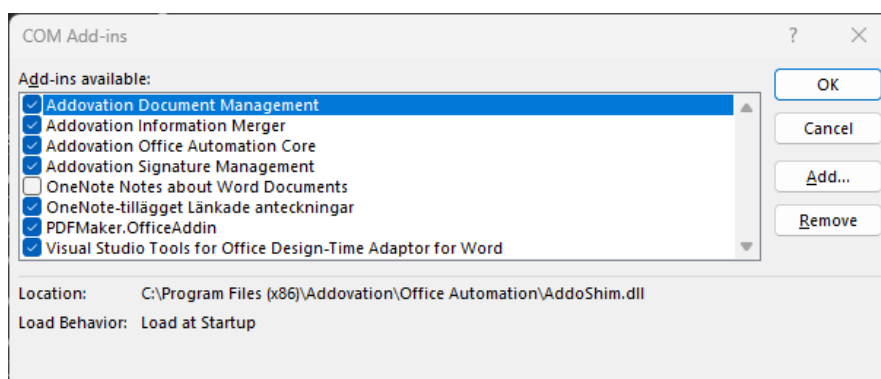
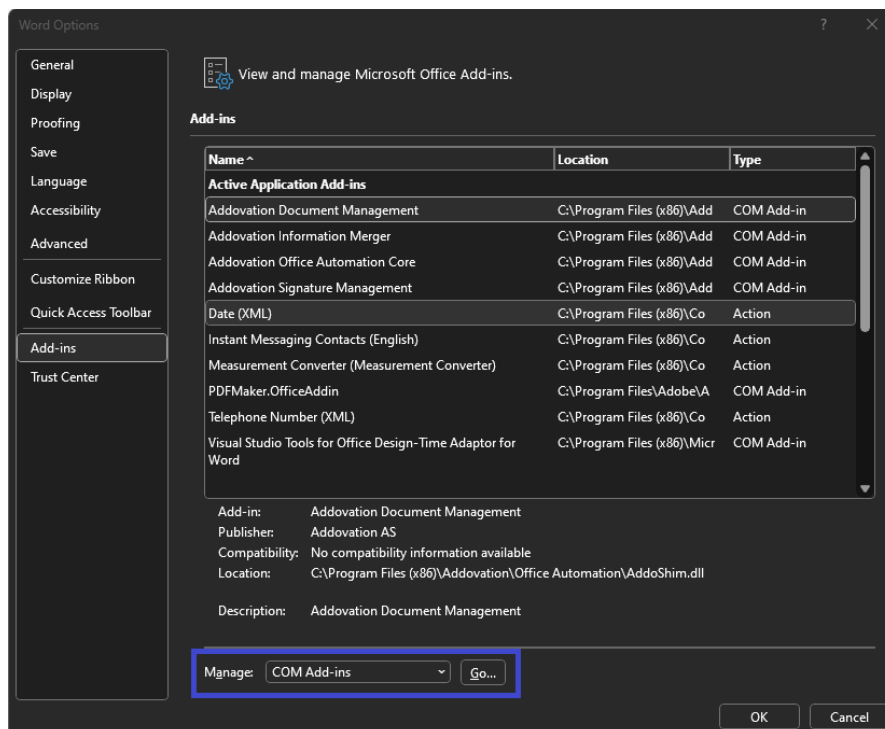
8.2.2 Re-Enable OAS Add-ins from Office applications

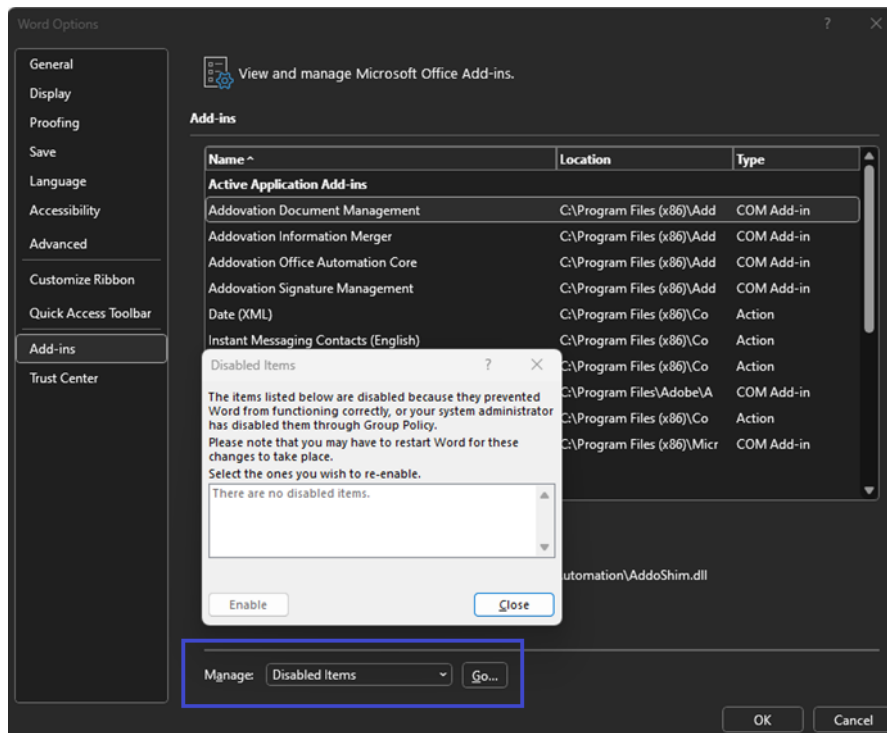
You can manually check and enable the OAS add-ins in the File->Options dialog from the office applications.

Add-ins -> COM Add-ins -> Go

Addovation Add-ins should be checked/enabled.

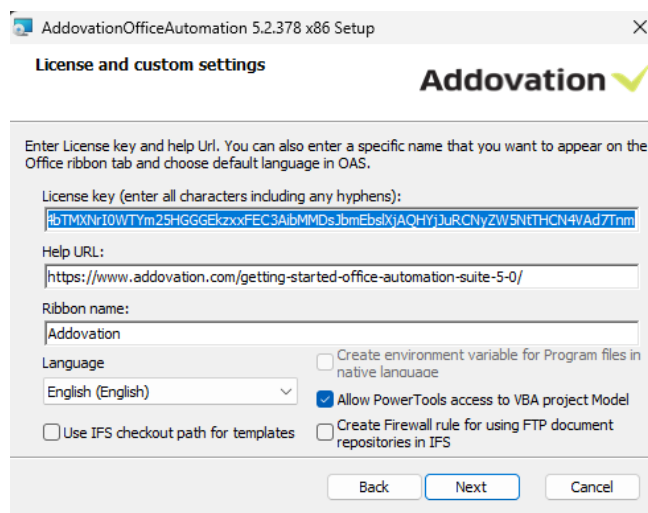
Similarly check for any disabled add-ins in the Disabled Items -> Go. Enable any Addovation Add-ins.





8.3 Updating the license key

- Through the installer
 - Run a modify/change of the installation and update the key



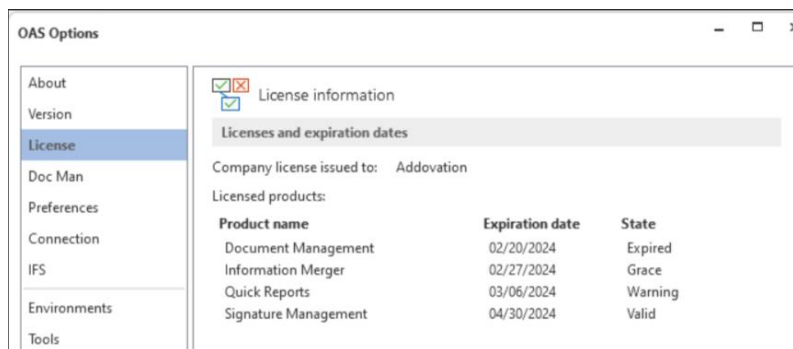
- In the registry
 - Update the relevant place in the computer registry
 - Key can be found in following places depending on the bitness of the installed application
 - Computer\HKEY_LOCAL_MACHINE\SOFTWARE\Addovation
 - Computer\HKEY_LOCAL_MACHINE\SOFTWARE\WOW6432Node\Addovation

Computer\HKEY_LOCAL_MACHINE\SOFTWARE\WOW6432Node\Addovation\Solutions\Configuration

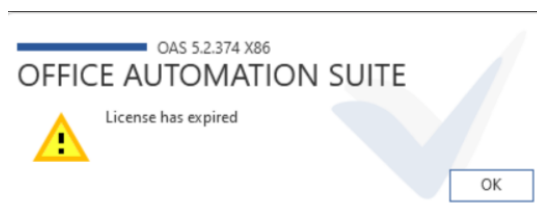
	Name	Type	Data
WOW6432Node	(Default)	REG_SZ	(value not set)
Addovation	AccessVBOM	REG_SZ	True
Automation Server	HelpURL	REG_SZ	https://www.addovation.com/getting-sta
Environment Configuration	InstallLanguage	REG_SZ	
Solutions	License	REG_SZ	UUjAeW-pr3pcM-xswMfC-LcA37f-tn3JSg-
Configuration	RibbonName	REG_SZ	Addovation
DocMan	SetupVersion	REG_SZ	5.2.378 x86
LogonInfo	SilentSignon	REG_SZ	False
MessageTracking	UseDocCheckoutPathAlways	REG_SZ	
Ribbon			
Startup			

8.3.1 License Expiry

- Warning and error messages will appear when click OAS Addvation tab
- Warning period - 30 days before license expiry
- Grace period - 10 days after license expiry
- Valid/Warning period /Grace Period:

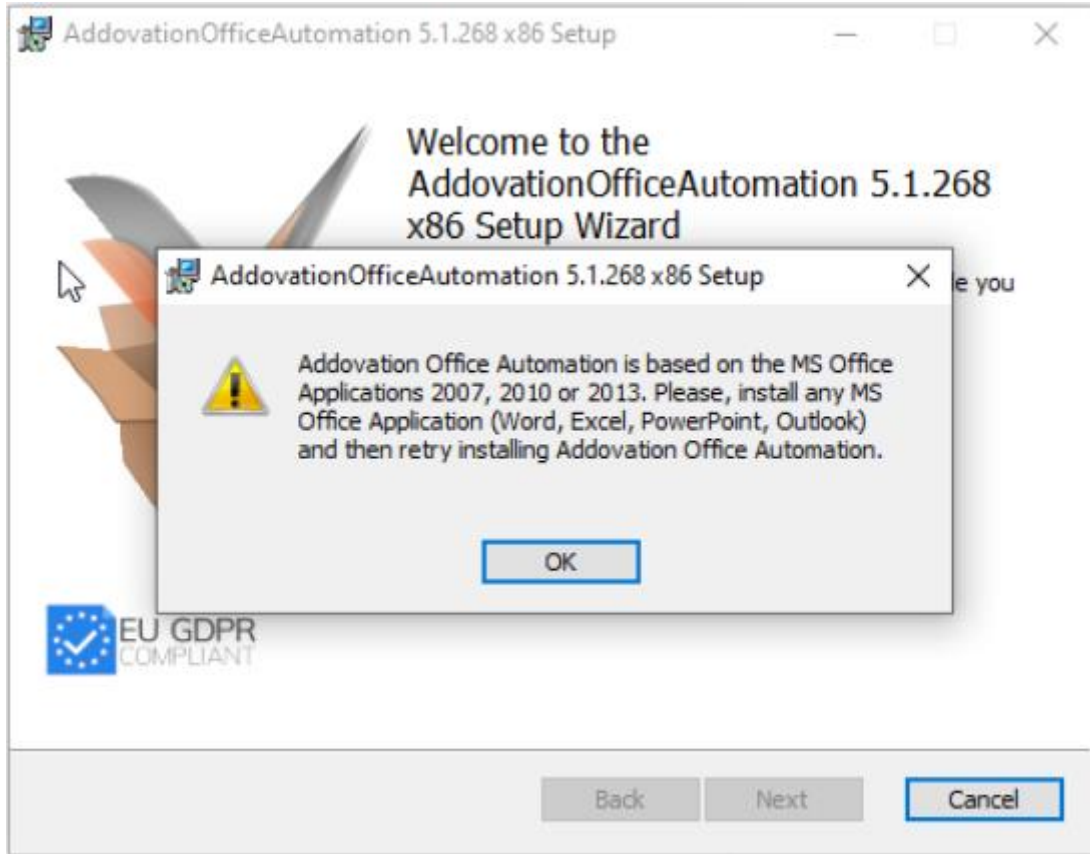


- Expired:



8.4 Registry Path variables for MS Office

- If end- user experience the below error, while installing OAS



- Verify the 'Path' variable in Registry entries
 - Computer\HKEY_LOCAL_MACHINE\SOFTWARE\Microsoft\Windows\CurrentVersion\App Paths\Winword.exe
 - Computer\HKEY_LOCAL_MACHINE\SOFTWARE\Microsoft\Windows\CurrentVersion\App Paths\excel.exe
 - Computer\HKEY_LOCAL_MACHINE\SOFTWARE\Microsoft\Windows\CurrentVersion\App Paths\OUTLOOK.EXE
 - Computer\HKEY_LOCAL_MACHINE\SOFTWARE\Microsoft\Windows\CurrentVersion\App Paths\powerpnt.exe

